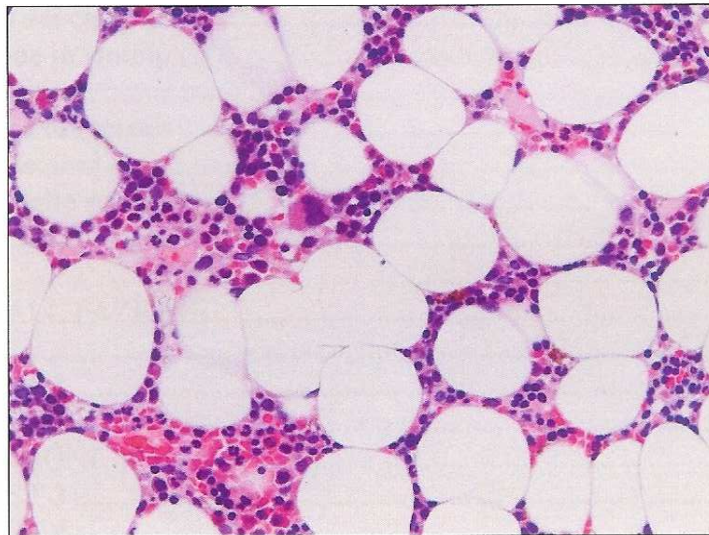


# **Post-fissazione con soluzione di Bouin, un alternativa per le biopsie osteomidollari?**



Jasmin Zampedri

Scuola Superiore Medico-Tecnica, Locarno

Giugno 2008

Lavoro svolto presso l'Istituto cantonale di Patologia di  
Locarno Responsabile Prof. Dr. Med. Mazzucchelli

li  
L  
d  
n  
c  
s  
lr  
c  
d  
L  
fr  
li  
L  
s  
p  
s  
n  
b  
(l  
ri  
L  
n  
te  
d  
b  
s  
d  
p  
M  
l  
ri  
s  
n  
il  
d  
lr  
h  
d  
d  
te  
e  
c  
L  
v  
n  
p  
c  
b  
F  
L  
c  
s  
n  
v  
d  
c  
p

# 1. ABSTRACT

## Introduction:

Histology is an important part of surgery and biology. It studies the cells they are made of, from a functional point of view. It is of high importance for a correct diagnosis. The Bouin solution is known to show excellent cytological results. Other solutions have been used but such good results are not always obtained. As described in the literature, Bouin is normally used as primary fixation. Tissues are kept in the Bouin solution for less than 24 hours. Currently, the biological tissues are fixed in Bouin solution at the Institute of Pathology (ICP) often do not show good results. The importance of improving the Bouin solution is the reason why this work was carried out. The post-fixation (secondary fixation) of marrow's biopsies with Bouin solution has been chosen because of its complex morphology, which is essential for a correct diagnosis.

## Materials and methods:

The biopsies large enough to be used as material to perform the Bouin staining were chosen. First, the one half of the biopsies were post-fixed with Bouin solution and completely decalcified and then completely dehydrated. Successively, the tissues were stained with Bouin solution only and with Bouin solution and Bouin solution on a microscope glass, just before the Bouin solution. The cytomorphology of the tissues was evaluated by different procedures according to fixed criteria. The considered criteria were: eosin, Prussia's blue, Gomori's blue.

## Results:

Staining of the bone marrow biopsies after postfixation in the Bouin solution was unsatisfying by the pathologist because of the variation in the fixation's intensity. The staining procedure was considered samples were considered as a staining method.

la medicina,  
a studia la  
le che li  
morfologico

logico della  
una buona

a capacità di  
di ogni altro

i soprattutto

A questo  
ologici nella  
re le 24 ore,  
dei tessuti  
li Patologia  
re entro tali

he piccoli  
giustificato il  
lcuni aspetti  
daria) delle  
di Bouin. La  
ito è dettata  
patologo di  
o.

lazioni sono  
ri; i criteri di  
materiale in  
biopsie con  
metodo in

one valutato  
in soluzione  
della totale  
vamente, i  
Bouin dopo  
cedere alla

oni è stata  
ll'istituto per  
creato con  
ni prese in  
ia-eosina, il

atologi delle  
ne in Bouin  
ostrano che  
nche con la  
a all'interno  
i prese in  
valutazioni